



**India Meteorological Department
(Ministry of Earth Sciences)**

BULLETIN Number: 04 (BOB/03/2021)

TIME OF ISSUE: 1200 HOURS IST

DATED: 13.09.2021

FROM: INDIA METEOROLOGICAL DEPARTMENT (FAX NO. 24643965/24699216/24623220)

**TO: CONTROL ROOM, NDM, MINISTRY OF HOME AFFAIRS (FAX.NO. 23093750)
CONTROL ROOM NDMA (FAX.NO. 26701729)
CABINET SECRETARIAT (FAX.NO.23012284, 23018638)
PS TO HON'BLE MINISTER FOR S & T AND EARTH SCIENCES (FAX NO.23316745)
SECRETARY, MOES, (FAX NO. 24629777)
H.Q. (INTEGRATED DEFENCE STAFF AND CDS) (FAX NO. 23005137/23005147)
DIRECTOR GENERAL, DOORDARSHAN (23385843)
DIRECTOR GENERAL, AIR (23421105, 23421219)
PIB MOES (FAX NO. 23389042)
UNI (FAX NO. 23355841)
D.G. NATIONAL DISASTER RESPONSE FORCE (NDRF) (FAX NO. 26105912, 2436 3260)
DIRECTOR, PUNCTUALITY, INDIAN RAILWAYS (FAX NO. 23388503)
CHIEF SECRETARY, GOVT. OF ODISHA (FAX NO. 0674 -2536660)
CHIEF SECRETARY, GOVT. OF WEST BENGAL (FAX NO. 033-22144328)
CHIEF SECRETARY, ANDAMAN & NICOBAR ISLANDS (FAX NO. 03192- 232656)
CHIEF SECRETARY, ANDHRA PRADESH (FAX NO. 0863-2441029, 08645-246600)
CHIEF SECRETARY, JHARKHAND (FAX NO. 0651-2400255)
CHIEF SECRETARY, TELANGANA (FAX NO. 040-23453700)
CHIEF SECRETARY, CHHATTISGARH (FAX NO 0771-2221206)
CHIEF SECRETARY, GOA (FAX NO. 0832-2415201)
CHIEF SECRETARY, MAHARASHTRA (FAX NO. FAX NO. 022- 22028594)
CHIEF SECRETARY, GUJARAT (FAX NO. 079-23250305)
CHIEF SECRETARY, MADHYA PRADESH (FAX NO. 0755-2441076)**

Sub: Deep Depression over north coastal Odisha

The Deep Depression over north coastal Odisha moved further west-northwestwards during past 6 hours with a speed of 12 kmph, and lay centred at 0830 hrs IST of today, the 13th September, 2021, over north coastal Odisha, near latitude 20.9°N and longitude 86.5°E, about 20 km west-northwest of Chandbali and about 120 km east- southeast of Keonjhar (Odisha).

It is very likely to continue to move west-northwestwards across north Odisha, north Chhattisgarh & Madhya Pradesh during next 48 hours. It is very likely to weaken into a Depression during the next 24 hours.

Warnings:

(i) Rainfall

- Light to moderate rainfall at most places: with heavy to very heavy rainfall at a few places & extremely heavy falls at isolated places very likely over Odisha & Saurashtra and heavy to very heavy rainfall & extremely heavy falls at isolated places very likely over Chhattisgarh, South Gujarat region and north Konkan (Palghar District) on 13th September and over southwest Madhya Pradesh, south Gujarat region and Saurashtra on 15th September.
- Light to moderate rainfall at many places: with isolated heavy to very heavy falls very likely over north Madhya Maharashtra on 13th & 14th September, heavy rainfall at isolated places

over Madhya Pradesh and Vidarbha on 13th, very heavy rainfall at isolated places over Madhya Pradesh on 14th and over adjoining areas of east Madhya Pradesh on 15th.

(ii) Light to moderate rainfall at many places: with isolated heavy falls over north coastal Andhra Pradesh, Gangetic West Bengal, Jharkhand and Telangana on 13th.

(iii) Wind warning

- Squally wind speed reaching 50-60 kmph to gusting 70 kmph very likely over north & adjoining westcentral Bay of Bengal and along & off Odisha, West Bengal and North Andhra Pradesh coasts during next 12 hours and decrease gradually becoming 40 -50 kmph gusting to 60 kmph during the subsequent 12 hours.

(iv) Sea condition

- Sea condition will be rough to very rough over north & adjoining westcentral Bay of Bengal and along & off Odisha, West Bengal & North Andhra Pradesh coasts during next 12 hours.

(iv) Fishermen Warning

- The fishermen are advised not to venture into north & adjoining westcentral Bay of Bengal and along & off Odisha, West Bengal & North Andhra Pradesh coasts during next 12 hours.

(v) EXPECTED IMPACT & ACTION SUGGESTED Due to very Heavy/Extremely heavy Rainfall over Odisha & Chhattisgarh on 13th, Madhya Pradesh on 13th & 14th, north Konkan, Madhya Maharashtra and Vidarbha during 13th-14th September 2021.

A. Impact Expected

- Localized Flooding of roads, inundation and water logging in low lying areas and closure of underpasses mainly in urban areas of the above region.
- Occasional reduction in visibility due to heavy rainfall.
- Disruption of traffic in major cities due to water logging in roads leading to increased travel time.
- Minor damage to kutch roads. Possibilities of damage to vulnerable structure.
- Localized Landslides/Mudslides
- Damage to horticulture and standing crops in some areas due to inundation and strong winds.
- It may lead to riverine flooding in some river catchments (for riverine flooding please visit Web page of Central Water Commission)

B. Action Suggested

- Check for traffic congestion on your route before leaving for your destination.
- Follow any traffic advisories that are issued in this regard.
- Avoid going to areas that face the water logging problems often.
- Avoid staying in vulnerable structure.
- Follow IMD warnings for updates

Realised rainfall over Odisha:

Accumulated realised rainfall over Odisha (mm) during past 24 hours (0830 hours IST of 12th to 0830 hours IST of 13th Sep., 2021) is given in **Annexure**.

The next bulletin will be issued at 1430 hrs IST of 13thSeptember, 2021.

(Sunitha Devi)
Scientist-F, RSMC, New Delhi

Copy to: ACWC Kolkata/ Chennai/Mumbai CWC Bhubaneswar/CWC Visakhapatnam/CWC Ahmedabad/ MC Ranchi/MC Hyderabad/MC Raipur/MC Goa/MC Bhopal

LEGEND: Heavy Rainfall: 64.5 to 115.5mm, **Very Heavy Rainfall:** 115.6 to 204.4mm, **Extremely Heavy Rainfall:** 204.5mm or more. **Many Places:** 51% to 75% of the stations, **Most Places:** more than 76% of total stations, **Isolated Places:** Less than 25% of total stations



OBSERVED AND FORECAST TRACK OF DEEP DEPRESSION OVER NORTH COASTAL ODISHA BASED ON 0300 UTC OF 13TH SEPTEMBER, 2021



DATE/TIME IN UTC
IST=UTC + 0530
L: LOW PRESSURE AREA
WML: WELL MARKED LOW PRESSURE AREA
D: DEPRESSION (17-27 KT)
DD: DEEP DEPRESSION (28-33 KT)
CS: CYCLONIC STORM (34-47 KT)
SCS: SEVERE CYCLONIC STORM (48-63KT)
VSCS: VERY SEVERE CYCLONIC STORM (64-89 KT)
ESCS: EXTREMELY SEVERE CYCLONIC STORM (90-119 KT)
SuCS: SUPER CYCLONIC STORM (≥ 120 KT)

- LESS THAN 34 KT
- 34-47 KT
- ≥ 48 KT
- OBSERVED TRACK
- FORECAST TRACK
- CONE OF UNCERTAINTY

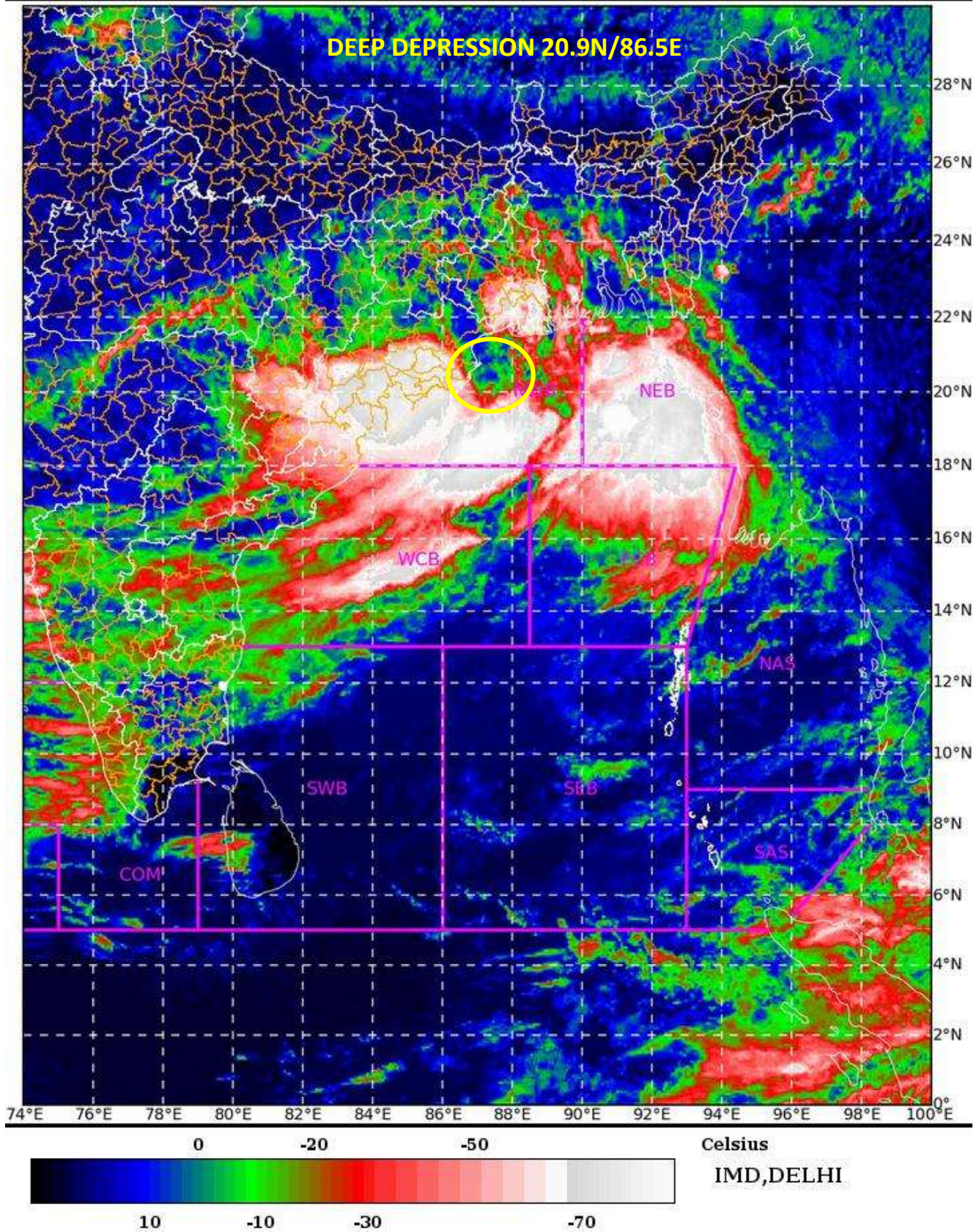
SAT : INSAT-3D IMG

13-09-2021/(0500 to 0526) GMT

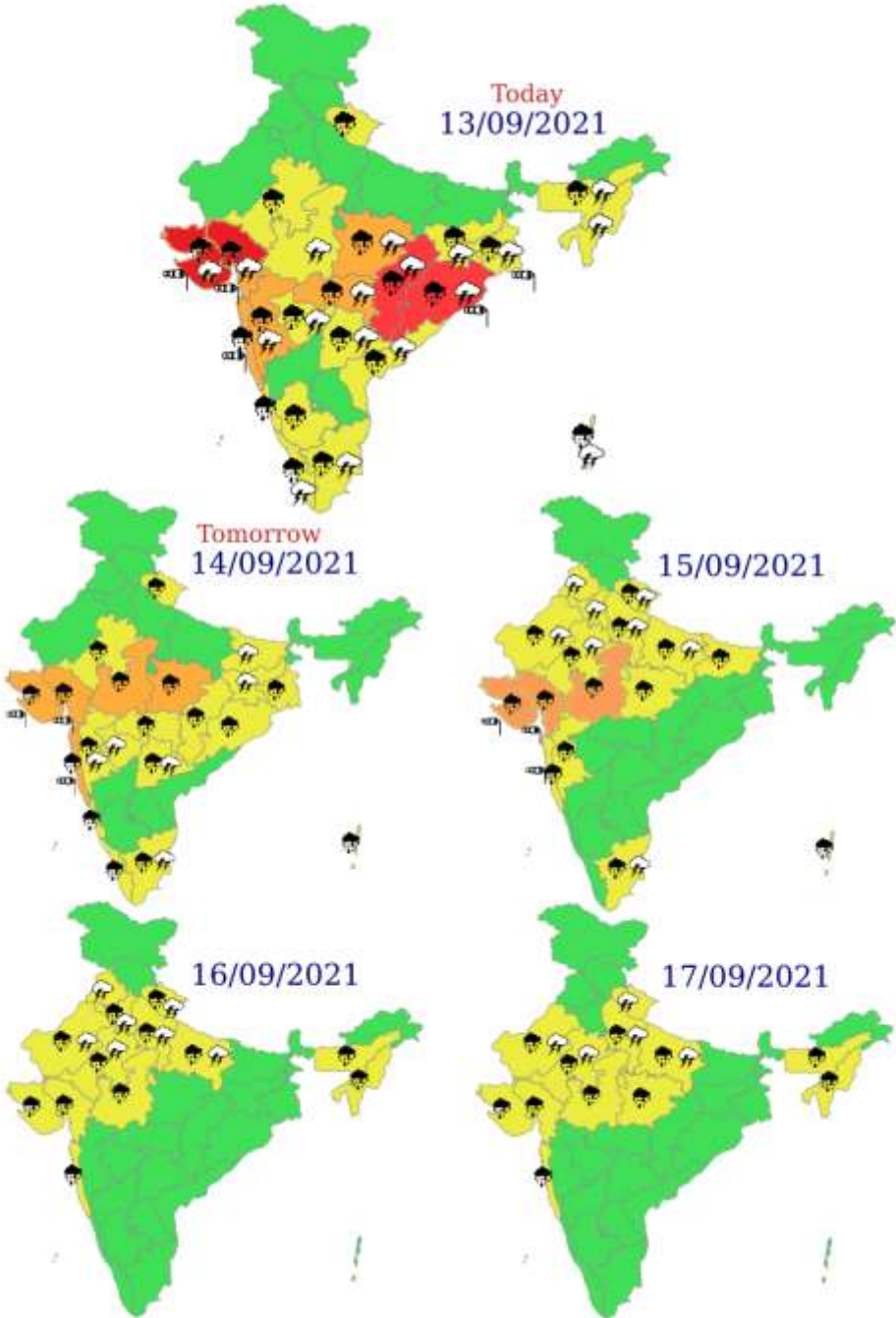
IMG_TIR1_TEMP 10.8 um

13-09-2021/(1030 to 1056) IST

L1C Mercator



Meteorological Sub-division level heavy rainfall warning



**24 hours accumulated realised rainfall over Odisha (mm) during
0830 hours IST of 12th to 0830 hours IST of 13th Sep., 2021**

Districts	Station	Rainfall
Puri	Astaranga	530.0
Puri	Kakatpur	525.0
Puri	Puri	342.5
Puri	Gop	331.0
Puri	Satyabadi	328.0
Khurda	Balipatna	280.5
Puri	Pipili	263.0
Puri	Brahmagiri	240.0
Khurda	Tangi	202.4
Khurda	Bhubaneswar	199.9
Puri	Krishnaprasad	179.4
Nayagarh	Nayagarh	154.7
Khurda	Bolagarah	148.0
Khurda	Banpur	139.0
Nayagarh	Odagaon	131.8
Nayagarh	Ranpur	125.4
Nayagarh	Dashpalla	112.2
Jagatsinghpur	Balikuda	440.0
Cuttack	Kantapada	381.0
Cuttack	Niali	370.0
Jagatsinghpur	Ragunathpur	323.0
Kendrapada	Kendrapada	276.0
Kendrapada	Marshaghai	270.0
Jagatsinghpur	Kujanga	265.0
Jagatsinghpur	Jagatsinghpur	264.0
Jagatsinghpur	Tirtol	245.0
Jagatsinghpur	Paradeep	220.8
Jajpur	Chandikhhol	220.0
Kendrapada	Derabis	206.0
Kendrapada	Garadpur	169.0
Jajpur	Binjharpur	149.4
Cuttack	Mahanga	147.0
Cuttack	Salipur	140.0
Jajpur	Bari	128.0
Jajpur	Jajpur	120.0
Cuttack	Banki	120.0
Cuttack	Cuttack	117.2
Sonepur	Birmaharajpur	200.0
Boudh	Boudhgarh	184.0
Sonepur	Ullunda	153.4
Boudh	Harabhanga	152.0
Kandhamal	Phulbani	151.2
Sonepur	Sonepur	145.0
Sambalpur	Rairakhol	109.0
Jharsuguda	Lakhanpur	96.2